



**Chi Sigma Iota**

*Member, Association of College Honor Societies*

*Counseling Academic & Professional Honor Society International*

***Promoting Excellence  
in the  
Profession of Counseling***



# Benefits of Membership

- Professional Network
- Recognition for Excellence
- Leadership Development
- Annual Conference
- Publications
  - *Exemplar*
  - *csi-net.org*





# CSI Professional Publications



Spring, 2004

Counseling Academic and Professional Honor Society International

Vol. 19 No. 1

- Published three times per year
- Special issues published bi-annually
- All past issues archived at [csi-net.org](http://csi-net.org)



# Activities & Programs

---

- Chapter Service & Social Activities
- Fellowship & Intern Programs
- Excellence & Research Grants
- Leaders & Scholars Programs
- Advocacy & Collaborative Projects



# Funded Programs

---

- **Chapter Rebates**
    - \$58,000/year
    - \$7 / active member / 260 chapters
  - **Grants & Fellowships**
    - \$18,500/year
  - **Initiation Speakers & Leadership Training**
    - \$12,000/year
-



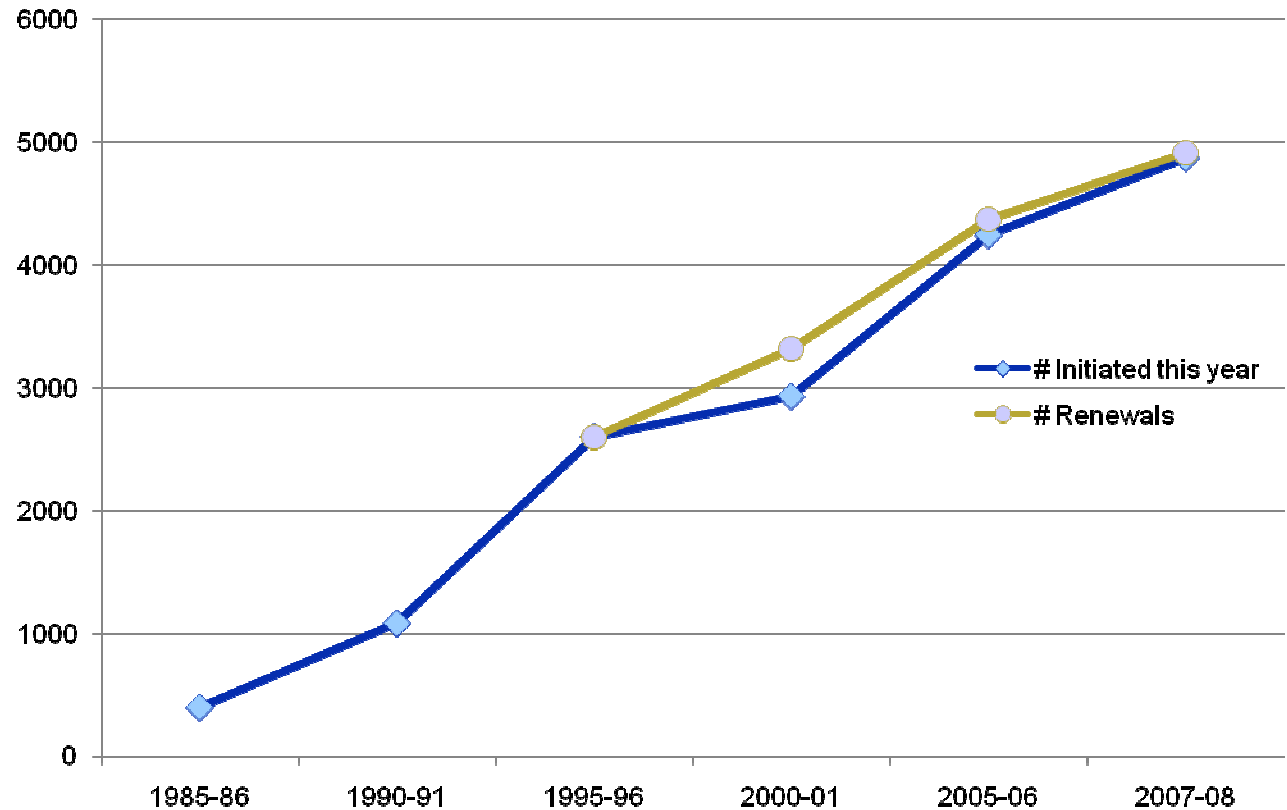
# Demographics

**13,500 + active members**

- **50 % counseling students**
- **50 % professional counselors**



# New Initiates & Renewals 1985-2008





# Growth History

1985	Ohio University	31 members
1995	10 <sup>th</sup> Anniversary	12,000 +
2000	15 <sup>th</sup> Anniversary	26,000 +
2005	20th Anniversary	42,000 +
2009	24st Anniversary	63,000 +
2010*	25th Anniversary*	68,000* +



# CSI Leadership

- 6 ACA Presidents
- 14 ACA Divisional Presidents
- 3 ACA Regional Chairs
- 10 ACA Branch Presidents
- 1 ACA Branch Executive Director
- 3 CACREP Chairs
- 1 CACREP Executive Director

***All donate their time and resources  
to the work of the Society.***



# 2009-10 Officers

---

Dr. Catharina Y. Chang,	President
Dr. JoLynn Carney,	President-Elect
Dr. Donna A. Henderson,	Past-President
Dr. Andrea Dixon,	Secretary
Dr. Shawn Surgeon,	Treasurer
Dr. Tom Sweeney,	Executive Director



# CSI Home Page

[csi-net.org](http://csi-net.org)

## Your one-stop source for:

- Membership Applications
- Chapter Training Materials
- Professional Advocacy Resources
- CSI Logo Memorabilia
- *and much, much more!!*



# CSI Store

[csistore.org](http://csistore.org)

**Your source for CSI memorabilia, logo items,  
professional clothing, graduation packs, and more!**



# For Further Information

---

**Chi Sigma Iota  
P.O. Box 35448  
Greensboro, NC 27425-5448**

**[tjsweeney@csi-net.org](mailto:tjsweeney@csi-net.org)**